

Eligibility

All students in a school-wide Title I program are eligible for services and intervention in reading and/or math. All students are served by Title I funds through a comprehensive program. There is no distinction between Title I services and general education services.

How are students chosen?

Throughout the year (September, January and May) students are assessed on their reading progress in the foundational skills of literacy. Coeur d'Alene School District uses a computer-adaptive assessment called, I-Station Indicators of Progress (ISIP) to assess skills such as phonological awareness, phonics, vocabulary, comprehension, and fluency. This information, along with data from their classroom teacher, is compiled and analyzed. We then develop instructional interventions and provide support services to students who show a need for improvement.

Parent Involvement

Research shows that parent involvement is critical to student success and student achievement. You CAN positively impact your child's school success by being involved in their school experience in the following ways

(Marzano, 2003):

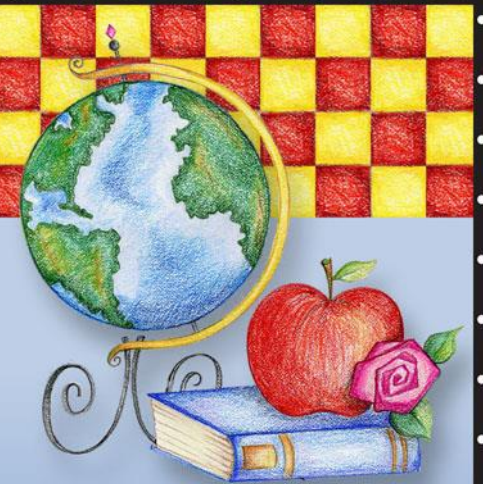
- Communicate with your child's teacher regularly by phone, email, or notes
- Get actively involved in your child's school by volunteering
- Participating in school decision making through joining the school's PTO/PTA.
- Attending parent teacher conferences



Atlas Elementary School

Invest, Inspire, Innovate

(208) 762-0626



Title I

Parent Information

- What is Title I?
- School Wide Program
- Atlas Team
- Eligibility
- Parent Involvement



Atlas Elementary

3000 W. Honeysuckle
Hayden, ID 83858

www.cdaschools.org/Atlas

(208) 762-0626

What is Title I?



Title I is the largest federally funded program for elementary, middle, and high schools in the country. Money is given to school districts, through Title 1, based on the number of low-income families in each district. Each district uses its Title I money for extra educational services for children most in need of additional support. The goal is to help children become successful in reading and math by providing extra lessons to reinforce reading/math strategies.

School Wide Program

School Wide Model

School-wide programs provide greater flexibility, but this comes with an expectation of greater results. This model is designed to enhance and upgrade the entire educational process within the school. School-wide models must use effective instructional strategies incorporating scientifically-based research. Instruction must be done by highly qualified staff.

The plan must also include components to increase parental involvement at the school. School and community engagement is important for the model's success. Parents are asked to help as planners, participants and decision makers in the operation of the program. Collaboration is based on a shared vision of the schools' values and overall mission. This partnership is vital in strengthening the program's ability to meet the needs of all students.

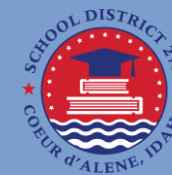
Notice

In accordance with federal legislation, school districts that receive Title I federal funds are required to notify parents of their right to request information about their child's teacher including degrees and certifications held and whether the teacher is certified in the area he/she is teaching. If you wish for more information, please contact the Director of Curriculum, and Assessment, Michael Nelson with the Coeur d'Alene school district.

Atlas Elementary Team

The Atlas Title I team consists of one Idaho State certified teacher and multiple highly qualified paraprofessional aids who work extremely hard to help students attain their goals by providing small group instruction in a pull-out, push-in and/or one-on-one instructional setting.

Atlas Elementary is committed to the goal of providing a quality education for ALL students. Partnerships among parents, teachers, students and the community will assist our school in meeting this goal. Everyone gains when the home, school and the community work together to promote high student achievements.



Please visit the Coeur d'Alene School District at www.cdaschools.org or visit the Atlas Elementary home website at www.cdaschools.org/Atlas for more information regarding Title I and any other services we provide here at Atlas.

Thank you for your continued support and encouragement of your child's education!