

2022-2023 SY - ELEMENTARY ENROLLMENT NUMBERS

5.24.2023

	Pre School	K 23		1 23		2 26		3 26		4 30		5 30		TOTAL	5.26.2022 Enrollment	5.27.2021 Enrollment
113 NW Expedition Life-Skills 18 Sections		22 21	21	21 21	21	22 21	22	25 24	25 24	23 23	29 23	28 23		420	484	407
		<b>Total</b>	<b>64</b>	<b>Total</b>	<b>63</b>	<b>Total</b>	<b>65</b>	<b>Total</b>	<b>77</b>	<b>Total</b>	<b>71</b>	<b>Total</b>	<b>80</b>			
105 ATLAS 18 Sections		24 22	23	21 20	20	24 24	24	27 12	24 13	29 28	8 29	19 29	30	441	441	394
		<b>Total</b>	<b>69</b>	<b>Total</b>	<b>81</b>	<b>Total</b>	<b>72</b>	<b>Total</b>	<b>63</b>	<b>Total</b>	<b>78</b>	<b>Total</b>	<b>78</b>			
110 SKYWAY Extended Resource 24 Sections		22 21	21	23 22	23	26 26	26	25 24	24 21	31 30	30 16	28 9	28 27	594	622	508
		<b>Total</b>	<b>85</b>	<b>Total</b>	<b>112</b>	<b>Total</b>	<b>104</b>	<b>Total</b>	<b>94</b>	<b>Total</b>	<b>107</b>	<b>Total</b>	<b>92</b>			
106 RAMSEY Extended Resource 21 Sections		22 21	22	20 18	19	25 24	24	27 26	27	25 23	25 22	29 23	23 20	483	516	469
		<b>Total</b>	<b>65</b>	<b>Total</b>	<b>75</b>	<b>Total</b>	<b>73</b>	<b>Total</b>	<b>80</b>	<b>Total</b>	<b>95</b>	<b>Total</b>	<b>95</b>			
109 HAYDEN MEADOWS 20 Sections		24 23	24	26 24	25	27 26	26	26 7	25 16	28 27	27	31 28	29	516	477	390
		<b>Total</b>	<b>93</b>	<b>Total</b>	<b>75</b>	<b>Total</b>	<b>86</b>	<b>Total</b>	<b>92</b>	<b>Total</b>	<b>82</b>	<b>Total</b>	<b>88</b>			
103 DALTON 15 Sections		25 21	24	22 21	22	27 27	27	26 13	26 14	29 29	30 11	29 18	29	393	390	355
		<b>Total</b>	<b>49</b>	<b>Total</b>	<b>65</b>	<b>Total</b>	<b>67</b>	<b>Total</b>	<b>66</b>	<b>Total</b>	<b>69</b>	<b>Total</b>	<b>77</b>			
101 BORAH 14 Sections Pre-School Kinder Plus		16 15	16	23 21	21	20	19	24 12	23 7	25	24	22	19	307	315	278
		<b>Total</b>	<b>47</b>	<b>Total</b>	<b>65</b>	<b>Total</b>	<b>51</b>	<b>Total</b>	<b>54</b>	<b>Total</b>	<b>49</b>	<b>Total</b>	<b>41</b>			
102 BRYAN 13 Sections		22	21	22	22	21 19	20	28	27	26	24	26	24	302	313	322
		<b>Total</b>	<b>43</b>	<b>Total</b>	<b>44</b>	<b>Total</b>	<b>60</b>	<b>Total</b>	<b>55</b>	<b>Total</b>	<b>50</b>	<b>Total</b>	<b>50</b>			
104 FERNAN 14 Sections Life-Skills		22	21	23 11	20 10	25	22	23 15	21 10	27	26 8	28 17		329	341	331
		<b>Total</b>	<b>54</b>	<b>Total</b>	<b>53</b>	<b>Total</b>	<b>62</b>	<b>Total</b>	<b>54</b>	<b>Total</b>	<b>61</b>	<b>Total</b>	<b>45</b>			
107 SORENSEN 12 Sections		23	23	23	23	26	26	26	26	28	28	30	29	311	314	296
		<b>Total</b>	<b>46</b>	<b>Total</b>	<b>46</b>	<b>Total</b>	<b>52</b>	<b>Total</b>	<b>52</b>	<b>Total</b>	<b>56</b>	<b>Total</b>	<b>59</b>			
108 WINTON 17 Sections Pathways		19 17	18	23 23	23	25 24	25	24 23	23	27	25	31 29	30	409	396	340
		<b>Total</b>	<b>54</b>	<b>Total</b>	<b>69</b>	<b>Total</b>	<b>74</b>	<b>Total</b>	<b>70</b>	<b>Total</b>	<b>52</b>	<b>Total</b>	<b>90</b>			
751 CDA Virtual Academy (CDVA) 2 Sections						3		8		8		5		27		
		<b>Total</b>				<b>3</b>		<b>9</b>		<b>8</b>		<b>7</b>				
1114 EARLY LEARNING CENTER	79													4611		
<b>TOTAL</b>	<b>79</b>	<b>669</b>		<b>748</b>		<b>766</b>		<b>757</b>		<b>770</b>		<b>795</b>		<b>4532</b>	4609	4090

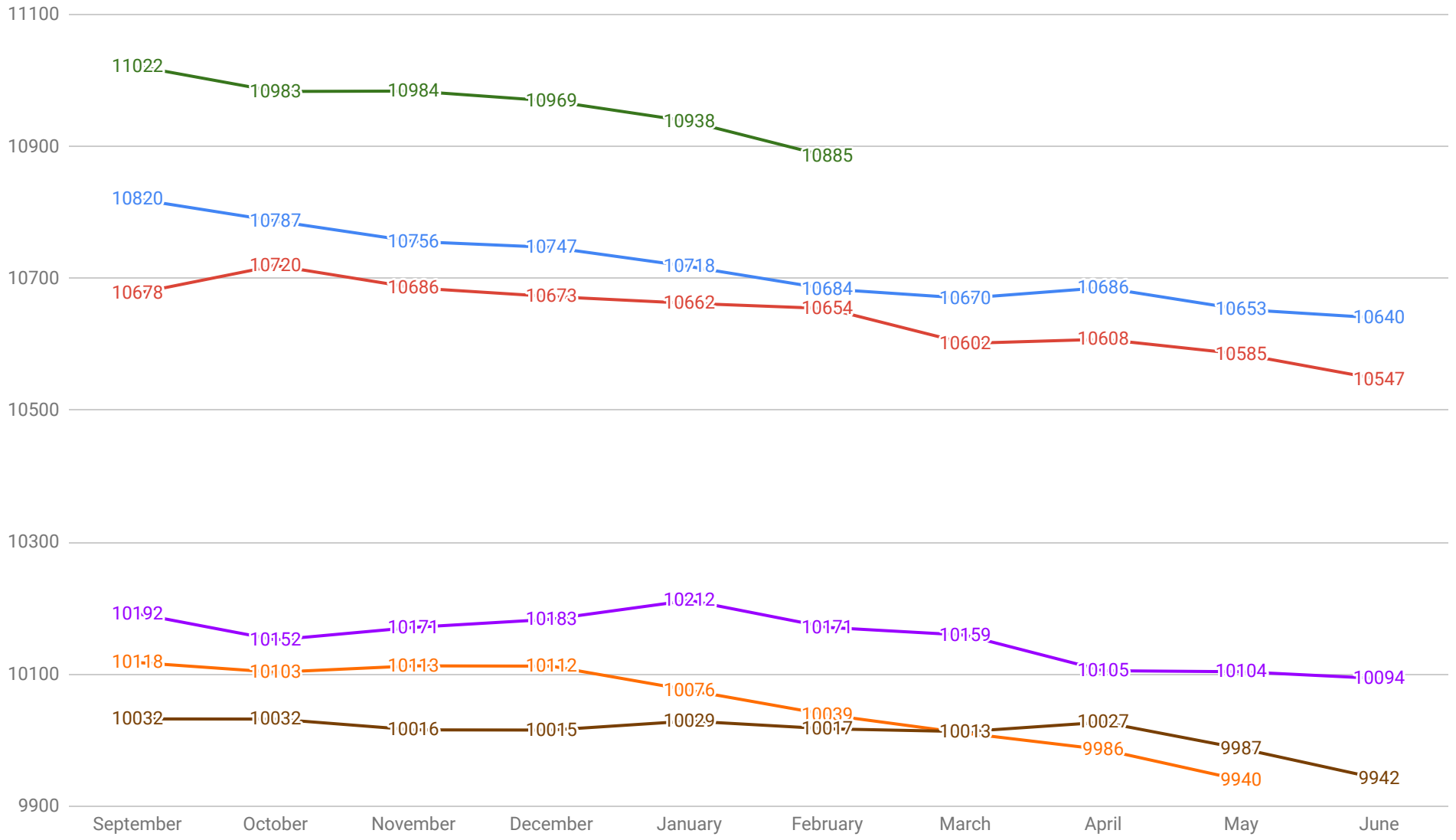
Classes over CAP	Teacher, no students	Students, no teacher	Title	TOTAL SECTIONS	CDVA Sections	Decrease of 77	Increase of 442
				186	2	5.26.2022	5.27.2021
Total Sections/Grade	30.5	34.5	32	30.5	29	29	
Avg Class size/Grade	21.93	21.68	23.94	24.82	26.10	27.41	

2022-2023 SY - SECONDARY ENROLLMENT NUMBERS							5.24.2023			
	6	7	8	9	10	11	12	TOTAL	5.26.2022	5.27.2021
									Enrollment	Enrollment
<b>CMS</b>	237	238	267					<b>742</b>	753	723
<i>Total</i>	237	238	267							
<b>LMMS</b>	194	204	191					<b>589</b>	627	596
<i>Total</i>	194	204	191							
<b>WMS</b>	239	281	286					<b>806</b>	893	774
<i>Total</i>	239	281	286							
<b>CHS</b>				391	404	334	340	<b>1469</b>	1536	1324
<i>Total</i>				391	404	334	340			
<b>LCHS</b>				424	375	345	343	<b>1487</b>	1501	1412
<i>Total</i>				424	375	345	343			
<b>VHS</b>				38	50	56	28	<b>172</b>	166	151
<b>CDA Virtual Academy (CDVA)</b>	11	15	23	21	34			<b>104</b>		
<i>Total</i>	11	15	23	21	34					
<b>JDC*</b>	1	1	4	5	6	1	0	<b>18</b>	19	14
<b>TOTAL</b>	<b>671</b>	<b>724</b>	<b>748</b>	<b>858</b>	<b>835</b>	<b>736</b>	<b>711</b>	<b>5387</b>	5495	4994
	<b>Online enrolled not yet in Skyward</b>			<b>Total enrollment by grade/school</b>					Decrease of 108	Increase of 393
									5.26.2022	5.27.2021

\* Students at JDC come from all schools within Kootenai County (CDA, Post Falls, Lakeland, Kootenai) and are enrolled in CDA School District while at JDC.

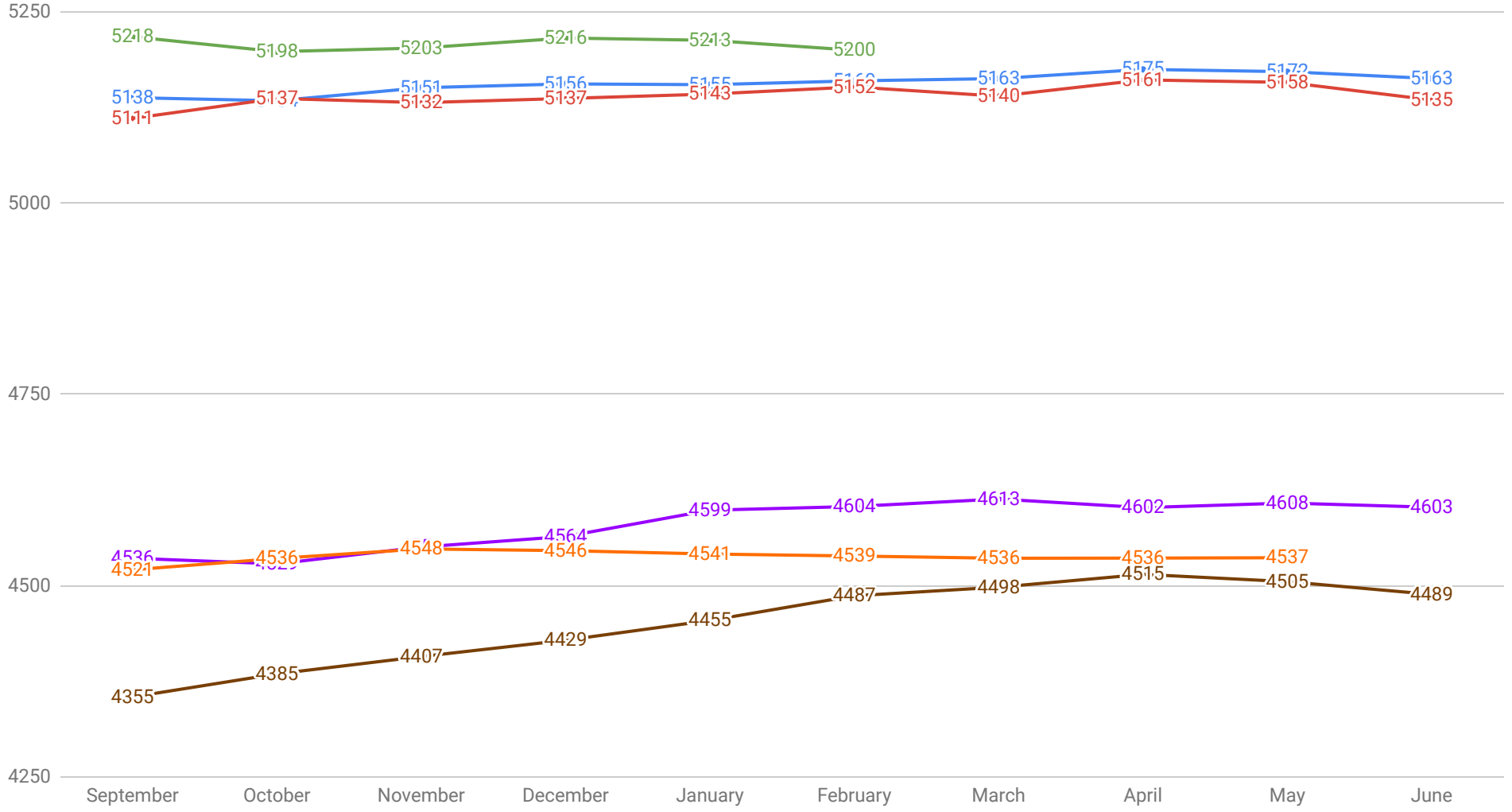
# DISTRICT-WIDE ENROLLMENT

2017-18 (Red)    2018-19 (Blue)    2019-20 (Green)    2020-21 (Brown)    2021-22 (Purple)    2022-23 (Orange)



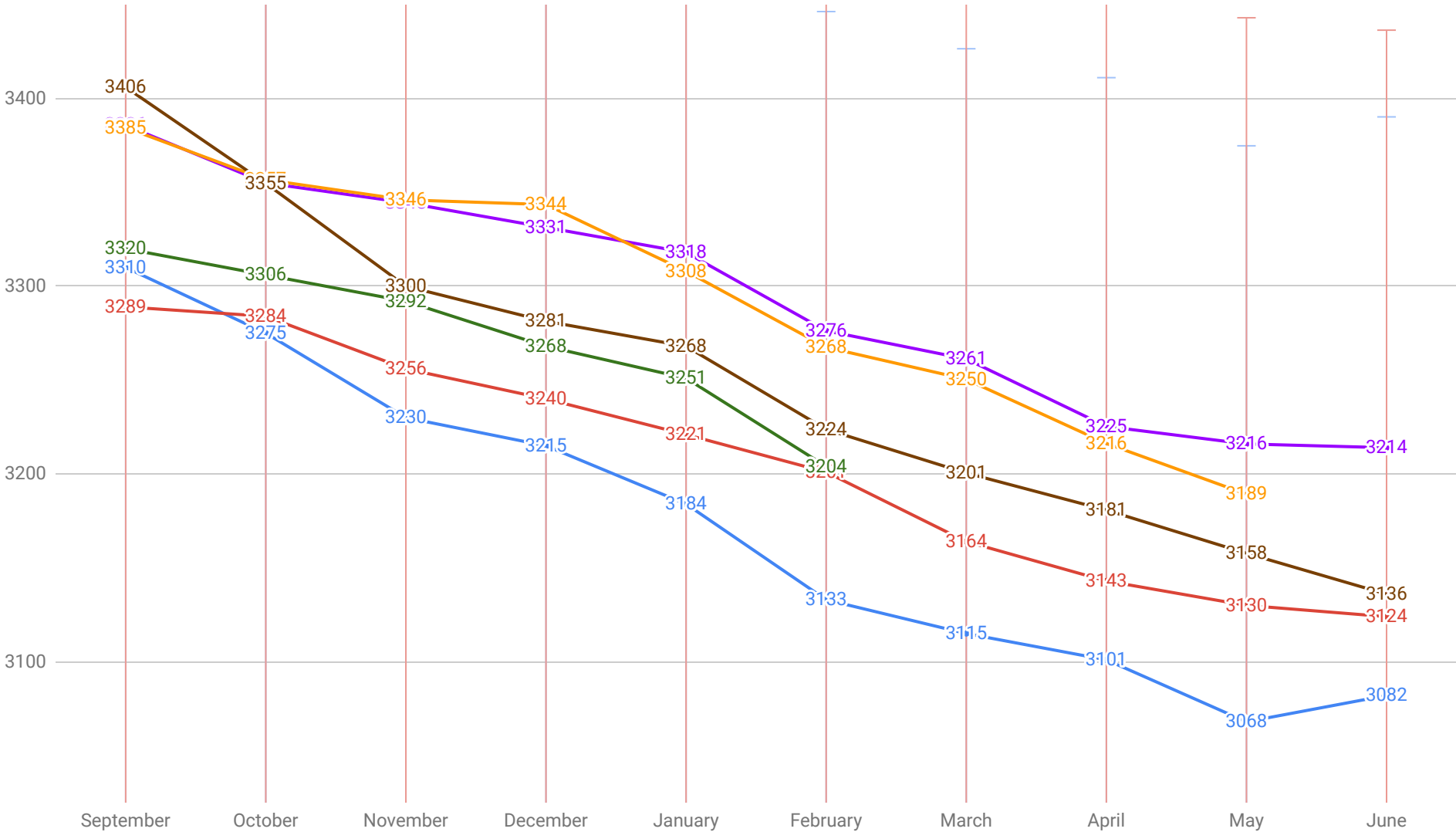
# ELEMENTARY ENROLLMENT

2017-18 (Red)    2018-19 (Blue)    2019-20 (Green)    2020-21 (Brown)    2021-22 (Purple)    2022-23 (Orange)



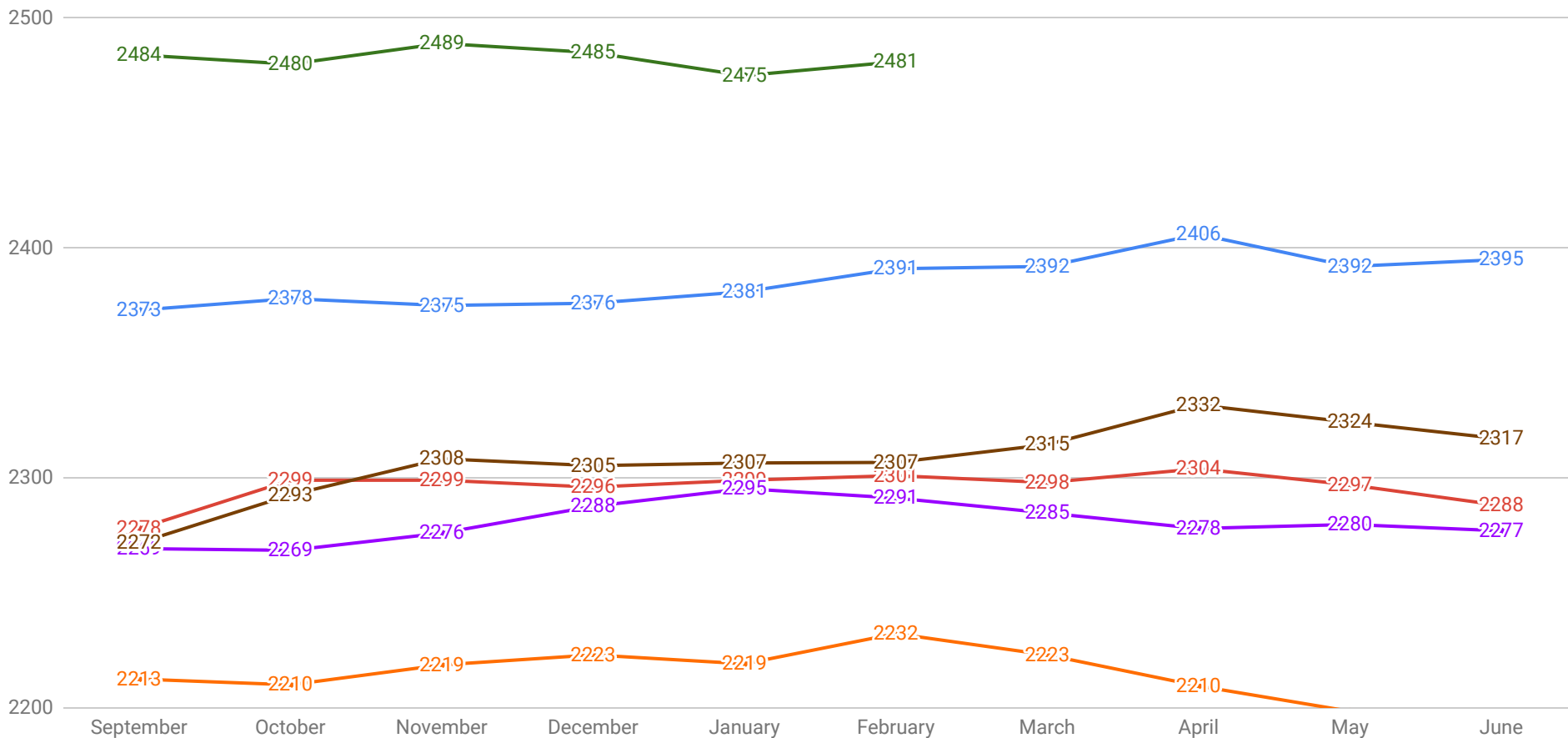
# HIGH SCHOOL ENROLLMENT

2017-18 (Red)    2018-19 (Blue)    2019-20 (Green)    2020-21 (Brown)    2021-22 (Purple)    2022-23 (Orange)



# MIDDLE SCHOOL ENROLLMENT

2017-18 (Red)    2018-19 (Blue)    2019-20 (Green)    2020-21 (Brown)    2021-22 (Purple)    2022-23 (Orange)



# SECONDARY ENROLLMENT

2017-18 (Red)    2018-19 (Blue)    2019-20 (Green)    2020-21 (Brown)    2021-22 (Purple)    2022-23 (Orange)

