

From Trent Derrick, Assistant Superintendent of Secondary Education

Mr. Derrick has been working with a committee for the past three months to evaluate the effectiveness of the grade 6-12 CDVA online program. They have explored different options that would improve the success of our students. In the course of our exploration, it has become evident that a restructuring of CDVA and of Venture High School could be an effective solution. Mr. Derrick will be presenting their proposal to the board during the May 8th board meeting. In summary, Venture High School would benefit from absorbing the 6-12 CDVA online program, which would result in potentially renaming Venture High School to Venture Academy to reflect the addition of middle school students in this school. The change would allow the district to be much more efficient in the use of administrative, certificated, and support staff, save district funds, and better serve our students who need a non-traditional learning structure.

From Stefany Bales, Community Relations Director

Below is a list of stories from the last couple of weeks around the levy and district financial emergency declaration.

April 26, 2023

[OPINION: Bringing facts to the levy discussion | Coeur d'Alene Press](#)

April 23, 2023

[CDA LEVY: Loss will be devastating for many students | Coeur d'Alene Press](#)

['We have identified the enemy' | Coeur d'Alene Press](#)

[EDITORIAL: PRESS ENDORSEMENTS: Support these candidates, vital issues | Coeur d'Alene Press](#)

[CDA school board names schools that could close if levy doesn't pass | Lewiston Tribune](#)

[OPINION: Enjoy the success, governor; it may not last | Lewiston Tribune | Lewiston Tribune](#)

[Viewpoint: Governor Little discusses the big issues of the 2023 legislative session | ktvb.com](#)

April 21, 2023

[CDA School District declares financial emergency | Coeur d'Alene Press](#)

[Borah Elementary 1 of 4 schools at risk of closing in Coeur d'Alene | YouTube](#)

[CDA school board names schools that could close if levy doesn't pass, declares financial emergency | Spokesman Review](#)

[Four elementary schools at risk of closing if CDA School District levy fails | News - kxly.com](#)

[Coeur d'Alene School District declares financial emergency ahead of levy vote | KHQ.com](#)

April 18, 2023

[Coeur d'Alene Public Schools approves declaration of financial emergency | KHQ.com](#)

2022-2023 SY - ELEMENTARY ENROLLMENT NUMBERS

4.27.2023

	Pre School	K 23		1 23		2 26		3 26		4 30		5 30		TOTAL	4.28.2022 Enrollment	4.29.2021 Enrollment
113 NW Expedition Life-Skills 18 Sections		22 21	21	22 21	21	23 21	22	28 25	25	26 24	24	29 23	28	NExA 426	484	408
Total		64		64		66		78		74		80				
105 ATLAS 18 Sections		24 22	23	21 20	21	24 24	24	27 12	24	29 13	8 28	19 29	30	Atlas 442	442	395
Total		69		82		72		63		78		78				
110 SKYWAY Extended Resource 24 Sections		22 21	21	23 23	22	26 26	26	25 24	24	31 30	30 16	28 9	27	Skyway 592	620	513
Total		84		113		103		94		107		91				
106 RAMSEY Extended Resource 21 Sections		22 21	21	20 18	19	25 24	24	27 26	27	25 23	25 22	29 23	23	Ramsey 482	516	470
Total		64		75		73		80		95		95				
109 HAYDEN MEADOWS 20 Sections		24 23	24	25 24	25	27 26	27	27 7	25	28 27	27	31 28	29	HM 517	473	390
Total		93		74		87		93		82		88				
103 DALTON 15 Sections		25 24	24	22 21	21	27 27	27	26 13	26	29 11	29 18	29	29	Dalton 391	390	353
Total		49		64		67		66		69		76				
101 BORAH 14 Sections Pre-School Kinder Plus		16 14	16	23 21	21	20 20	20	24 13	23	25 24	24	22 21	21	Borah 310	313	283
Total		46		65		53		54		49		43				
102 BRYAN 13 Sections		22 21	21	23 22	22	21 20	20	28 27	27	26 25	25	26 25	25	Bryan 306	313	323
Total		43		45		61		55		51		51				
104 FERNAN 14 Sections Life-Skills		22 11	21	23 10	20	25 22	22	23 15	21	28 8	26 17	28	28	Fernan 330	340	336
Total		54		53		62		54		62		45				
107 SORENSEN 12 Sections		23 23	23	23 23	23	26 26	26	26 26	26	28 28	28	30 29	29	Sorensen 311	314	296
Total		46		46		52		52		56		59				
108 WINTON 17 Sections Pathways		19 17	18	23 23	23	25 24	25	23 22	23	27 25	25	31 30	30	Winton 408	393	340
Total		54		69		74		68		52		91				
751 CDA Virtual Academy (CDVA) 2 Sections						3	3	8	9	8	8	5	6	CDVA 26		
Total		3		3		9		8		6						
1114 EARLY LEARNING CENTER	77													Enrollment Including Pre-School 4541		
TOTAL	77	666		750		770		757		775		797	4541	4598	4107	

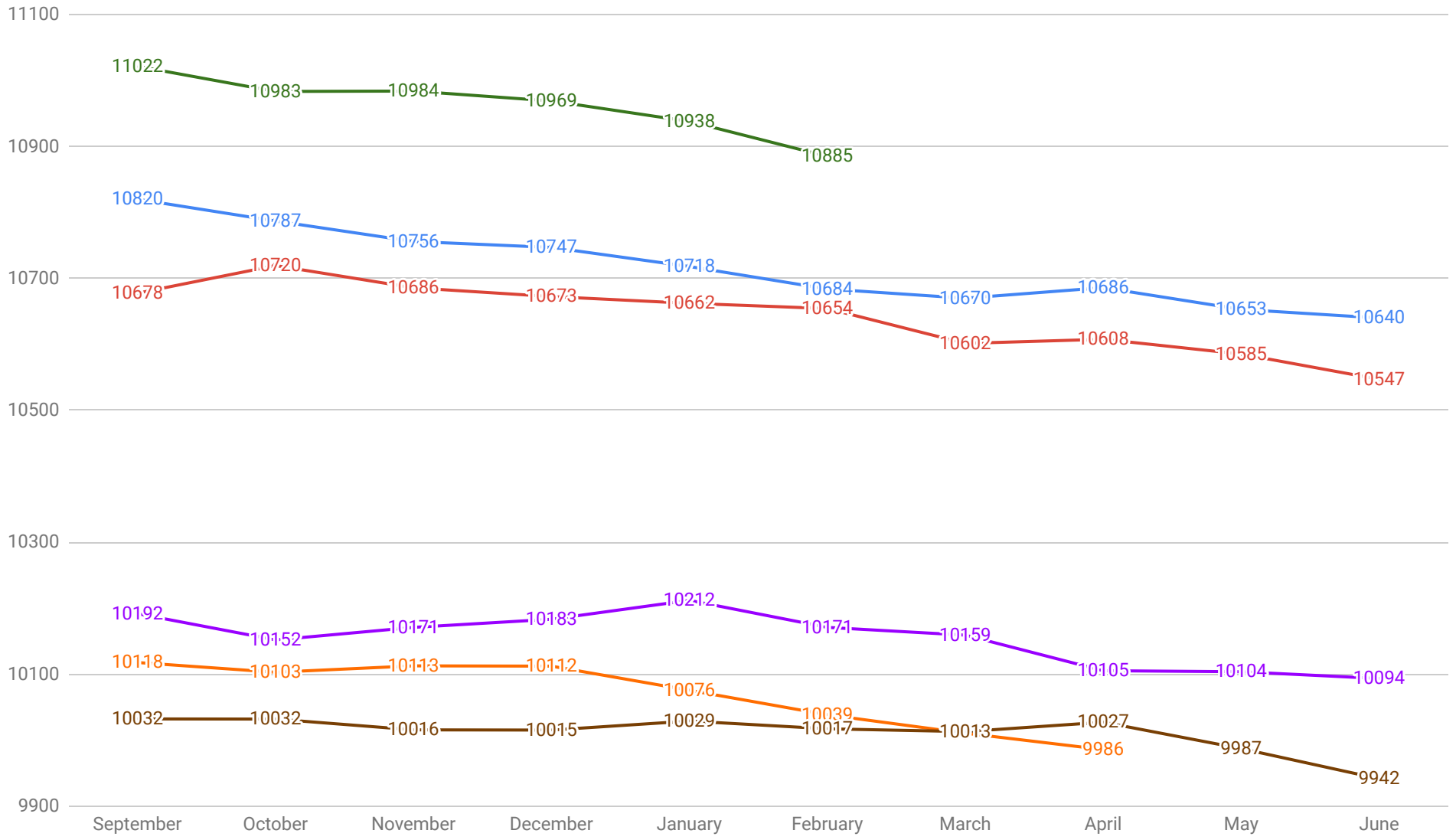
Classes over CAP	Teacher, no students	Students, no teacher	Title	TOTAL SECTIONS	CDVA Sections	Decrease of 4.28.2022	Increase of 4.29.2021
				186	2	57	434
Total Sections/Grade	30.5	34.5	32	30.5	29.5	29	27.48
Avg Class size/Grade	21.84	21.74	24.06	24.82	26.27	27.48	13.00

2022-2023 SY - SECONDARY ENROLLMENT NUMBERS						4.27.2023				
	6	7	8	9	10	11	12	TOTAL	4.28.2022	4.29.2021
									Enrollment	Enrollment
CMS	238	239	268					745	752	727
<i>Total</i>	238	239	268							
LMMS	195	207	191					593	624	596
<i>Total</i>	195	207	191							
WMS	244	282	289					815	898	775
<i>Total</i>	244	282	289							
CHS				395	409	337	343	1484	1535	1328
<i>Total</i>				395	409	337	343			
LCHS				427	376	344	344	1491	1504	1421
<i>Total</i>				427	376	344	344			
VHS				38	49	58	28	173	172	162
CDA Virtual Academy (CDVA)	11	16	25	21	35			108		
<i>Total</i>	11	16	25	21	35					
JDC*	1	1	4	7	8	4	1	26	10	15
TOTAL	678	729	752	867	842	743	716	5435	5495	5024
	Online enrolled not yet in Skyward			Total enrollment by grade/school					Decrease of 60	Increase of 411
									4.28.2022	4.29.2021

* Students at JDC come from all schools within Kootenai County (CDA, Post Falls, Lakeland, Kootenai) and are enrolled in CDA School District while at JDC.

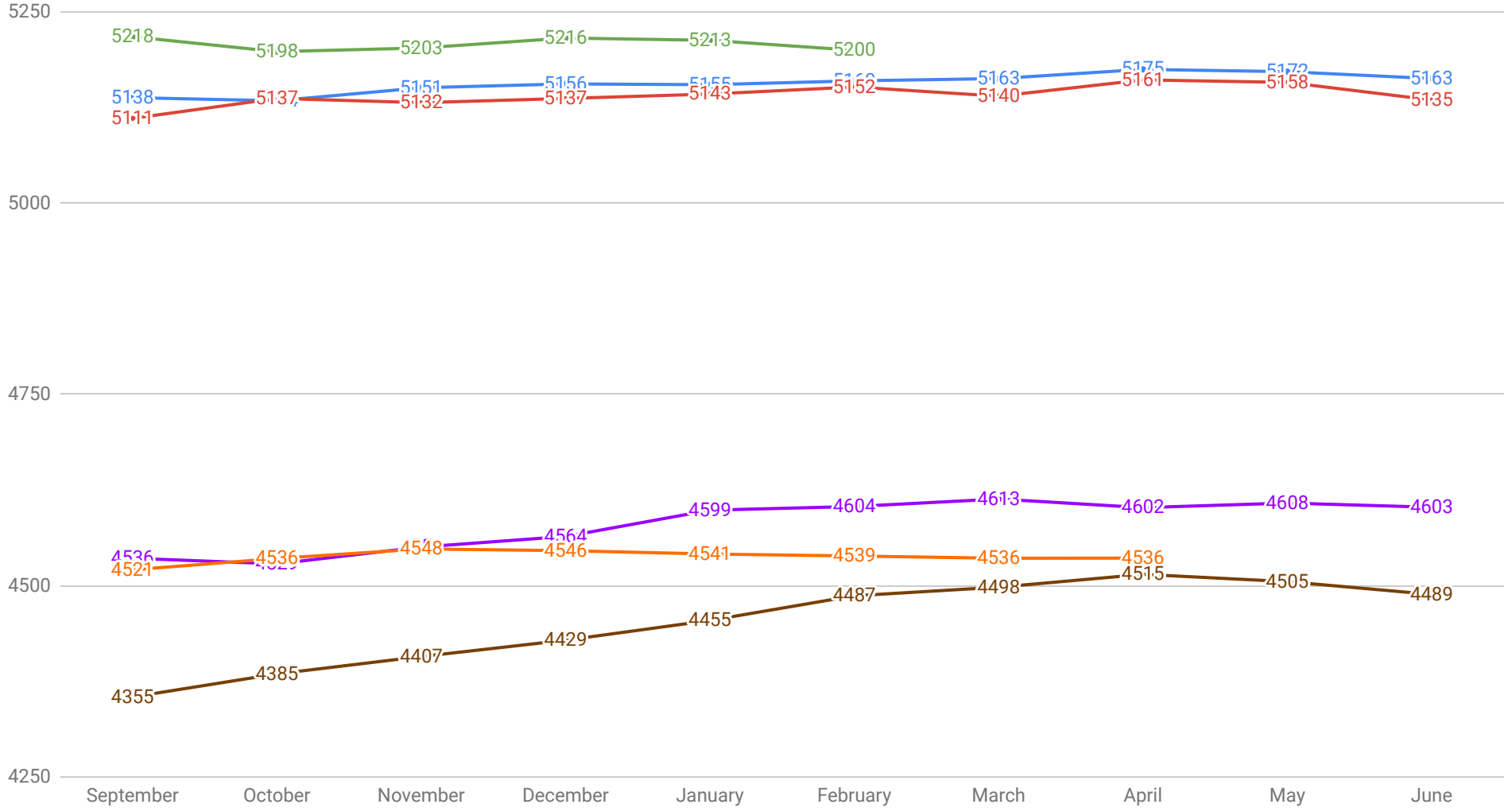
DISTRICT-WIDE ENROLLMENT

2017-18 (Red) 2018-19 (Blue) 2019-20 (Green) 2020-21 (Brown) 2021-22 (Purple) 2022-23 (Orange)



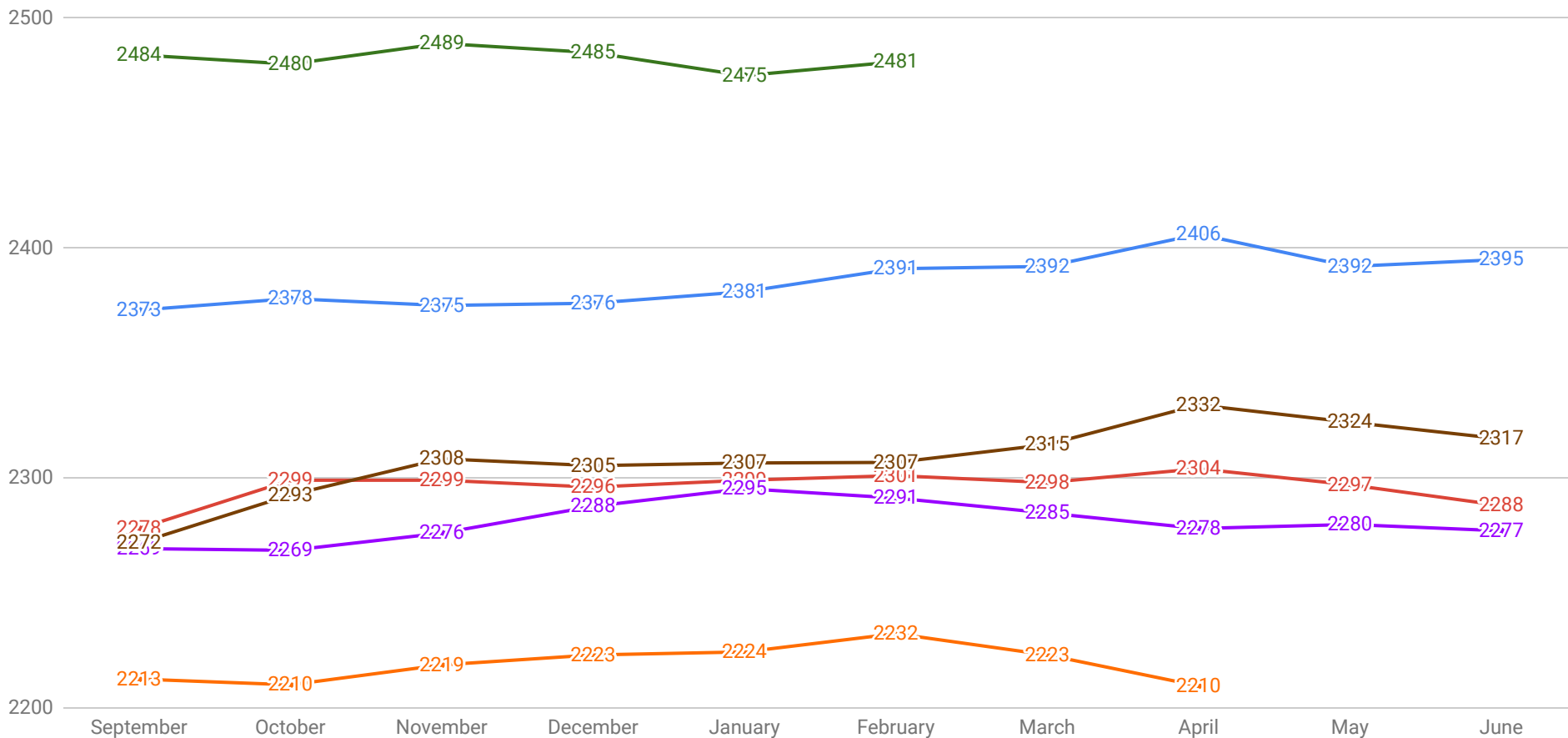
ELEMENTARY ENROLLMENT

2017-18 (Red) 2018-19 (Blue) 2019-20 (Green) 2020-21 (Brown) 2021-22 (Purple) 2022-23 (Orange)



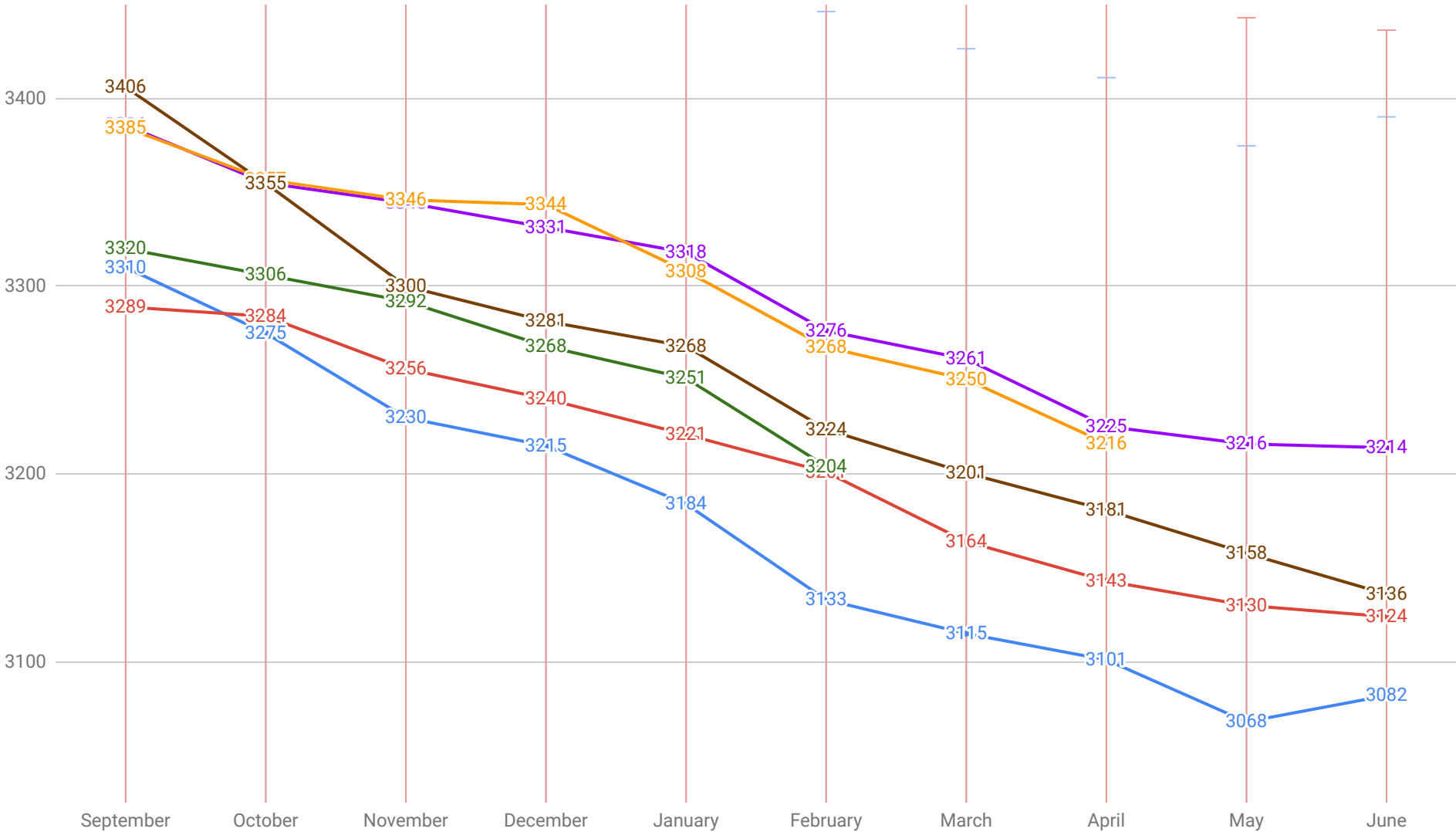
MIDDLE SCHOOL ENROLLMENT

2017-18 (Red) 2018-19 (Blue) 2019-20 (Green) 2020-21 (Brown) 2021-22 (Purple) 2022-23 (Orange)



HIGH SCHOOL ENROLLMENT

2017-18 (Red) 2018-19 (Blue) 2019-20 (Green) 2020-21 (Brown) 2021-22 (Purple) 2022-23 (Orange)



SECONDARY ENROLLMENT

2017-18 (Red) 2018-19 (Blue) 2019-20 (Green) 2020-21 (Brown) 2021-22 (Purple) 2022-23 (Orange)

