

VIOLIN

# CDA HS - ONE OCTAVE MINOR SCALE AND ARPEGGIO

## C melodic minor (1st position)

3 0 1 2 3 0 1 2 2 1 3 2 1 4 3

3 1 3 2 2 3 1 3

The first staff shows the C melodic minor scale in 1st position, ascending and descending. The second staff shows the corresponding arpeggio, starting on C4 and ending on C5.

## G melodic minor

0 1 2 3 0 1 2 3 3 2 1 4 3 2 1 0

0 2 0 3 3 4 2 0

The first staff shows the G melodic minor scale in 1st position, ascending and descending. The second staff shows the corresponding arpeggio, starting on G4 and ending on G5.

## D melodic minor

0 1 2 3 0 1 2 3 3 2 1 3 2 1 0

0 2 4 3 3 4 2 0

The first staff shows the D melodic minor scale in 1st position, ascending and descending. The second staff shows the corresponding arpeggio, starting on D4 and ending on D5.

## A melodic minor

1 2 3 0 1 2 3 4 4 3 2 1 4 3 2 1

1 3 1 4 4 1 3 1

The first staff shows the A melodic minor scale in 1st position, ascending and descending. The second staff shows the corresponding arpeggio, starting on A4 and ending on A5.

### E melodic minor

2

1 2 3 4 1 2 3 4 4 3 2 1 4 3 2 1

1 3 1 4 4 1 3 1

### B melodic minor

2 3 4 1 2 3 4 1 1 4 3 2 1 4 3 2

2 4 2 3 3 2 4 2

### F# melodic minor

2 3 4 1 2 3 4 1 1 4 3 2 1 4 3 2

2 4 2 3 3 2 4 2

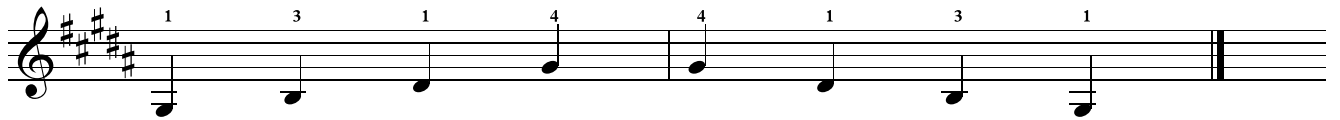
### C# melodic minor (3rd position)

III

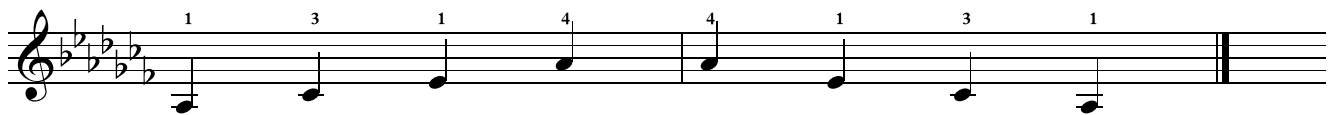
2 3 4 1 2 3 4 1 1 4 3 2 1 4 3 2

4 2 3 3 2 4 2

**G# melodic minor (1/2 position)**



**Ab melodic minor (1/2 position)**



**D# melodic minor (1/2 position)**



**Eb melodic minor (1/2 position)**



**A# melodic minor**

4

1 2 3 4 1 2 3 4 4 3 2 1 4 3 2 1

1 3 1 4 4 1 3 1

**Bb melodic minor**

2 3 4 1 2 3 4 1 1 4 3 2 1 4 3 2

2 4 2 1 1 2 4 2

**F melodic minor**

2 3 4 1 2 3 4 1 1 4 3 2 1 4 3 2

2 4 2 1 1 2 4 2